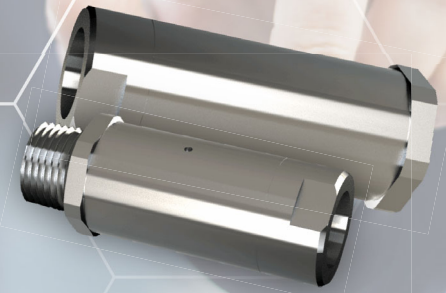




-Helps to meet OSHA and other safety agency requirements for 2 bar/30 PSI pressure that is typical for pneumatic blow guns.







Available in 1/4", 3/8", 1/2" & 3/4" NPT - F/F or F/M
Pressure Ranges: 30 PSI up to 120 PSI

ToolReg **Description**

An independent piston regulator that automatically provides the exact pressure to pneumatic tools and blow guns with automatic secondary pressure relief when the tool is disconnected.

The ToolReg prevents *dynamic pressure waste* that arises when the pressure and flow (at the process point) are unnecessarily higher than those specified by the original manufacturer to achieve the desired function.

ToolReg **Benefits**

-  Self-Relieving. No residual pressure in the tool when disconnected.
-  High pressure (up to 355 PSI) and high flow (up to 105 SCFM) models available.
-  Prevents compressed air waste and reduces cost by saving energy.
-  Increases pneumatic tool service life and is pre-set at the factory. Tamper proof.

