

VALVE SIZE	"A" THREADED ENDS	"B" FLANGED ENDS								"E" DIM	"G" DIA	"J" DIM
		125# C.I./D.I.	150# C.S./S.S.	150# BRONZE	250# C.I./D.I.	300# C.S./S.S.	300# BRONZE	600# C.S./S.S.	1500# C.S./S.S.			
1/2"	6"		8 3/8"			8 3/8"		8 3/4"	11 3/4"	4 23/32"	6 1/4"	2 13/16"
3/4"	6"		8 3/8"			8 3/8"		8 3/4"	11 3/4"		6 1/4"	2 13/16"
1"	6"		8 3/8"			8 3/8"		8 3/4"	11 3/4"		6 1/4"	2 13/16"
1 1/2"	9 7/8"		12 1/2"			12 1/2"		13 1/2"		5 3/8"	7"	3 3/4"
2"	9 7/8"		12 1/2"			12 1/2"		13 1/2"		5 13/16"	8"	4"
3"		12"	12"	12"	12 1/2"	12 1/2"	12 1/2"	13 1/4"		7 9/32"	10 3/4"	5 5/16"
4"		14"	14"	14"	14 1/2"	14 1/2"	14 1/2"	15 1/2"		7 9/32"	10 3/4"	5 5/16"

REVISIONS			
REV	DESCRIPTION	DATE	INITIAL
A	BD BACK PRESSURE	05/23/17	QSG

D

D

C

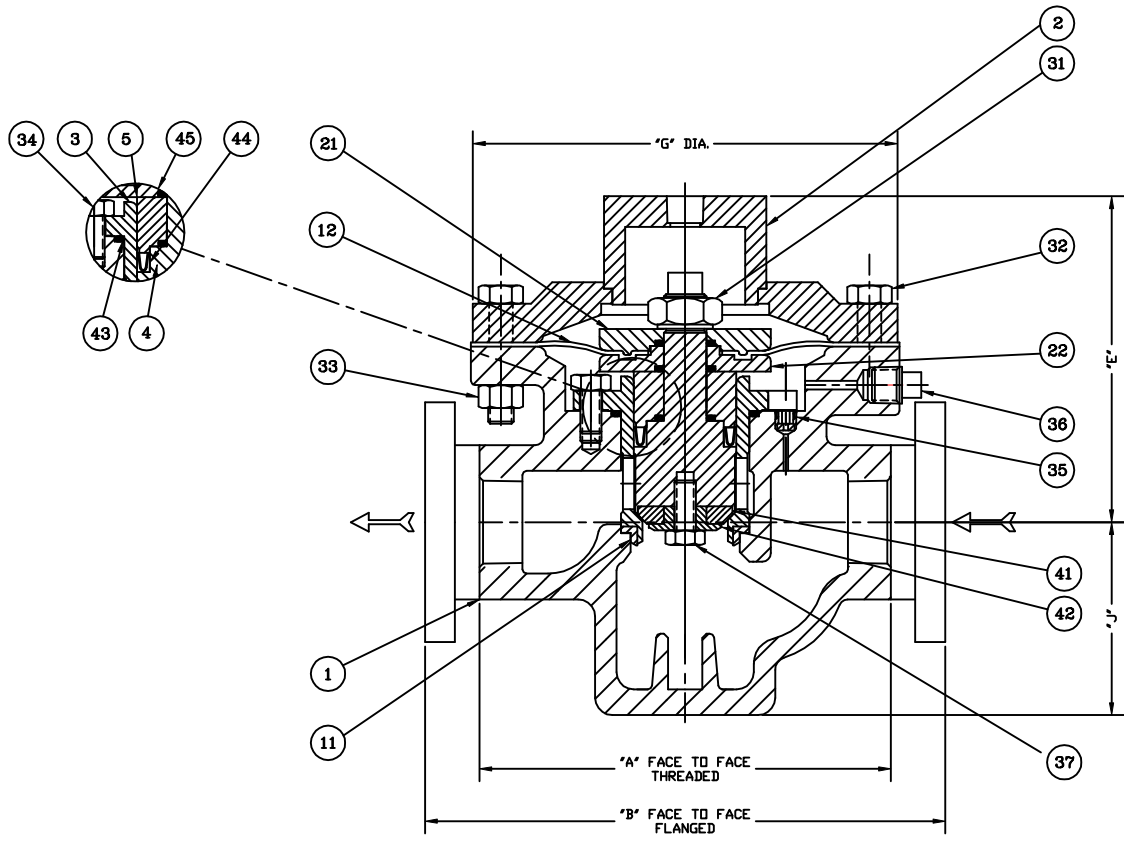
C

B

B

A

A



0.5" THRU 4" BD BACK PRESSURE

ITEM NO.	QTY REQ.	DESCRIPTION
45	3	STEM SEAL
44	1	PISTON SEAL
43	1	CYLINDER SEAL
42	1	WASHER
41	1	DISC
37	1	STEM BOLT
36	1	PIPE PLUG
35	1	INTERNAL PLUG
34	3	CYLINDER BOLT
33	8	BODY NUT
32	8	BODY BOLT
31	1	STEM NUT
22	1	LOWER MEMBRANE PLATE
21	1	UPPER MEMBRANE PLATE
12	1	MEMBRANE
11	1	MACHINED SEAT
5	1	MACHINED PISTON
4	1	MACHINED STEM
3	1	CAST CYLINDER
2	1	DOME ASSEMBLY
1	1	CAST BODY

DRAWN BY: QSG DATE: 05/23/17		DWG NO. BD BACK PRESSURE		REV A
		SCALE: N.T.S.	SHEET 1	